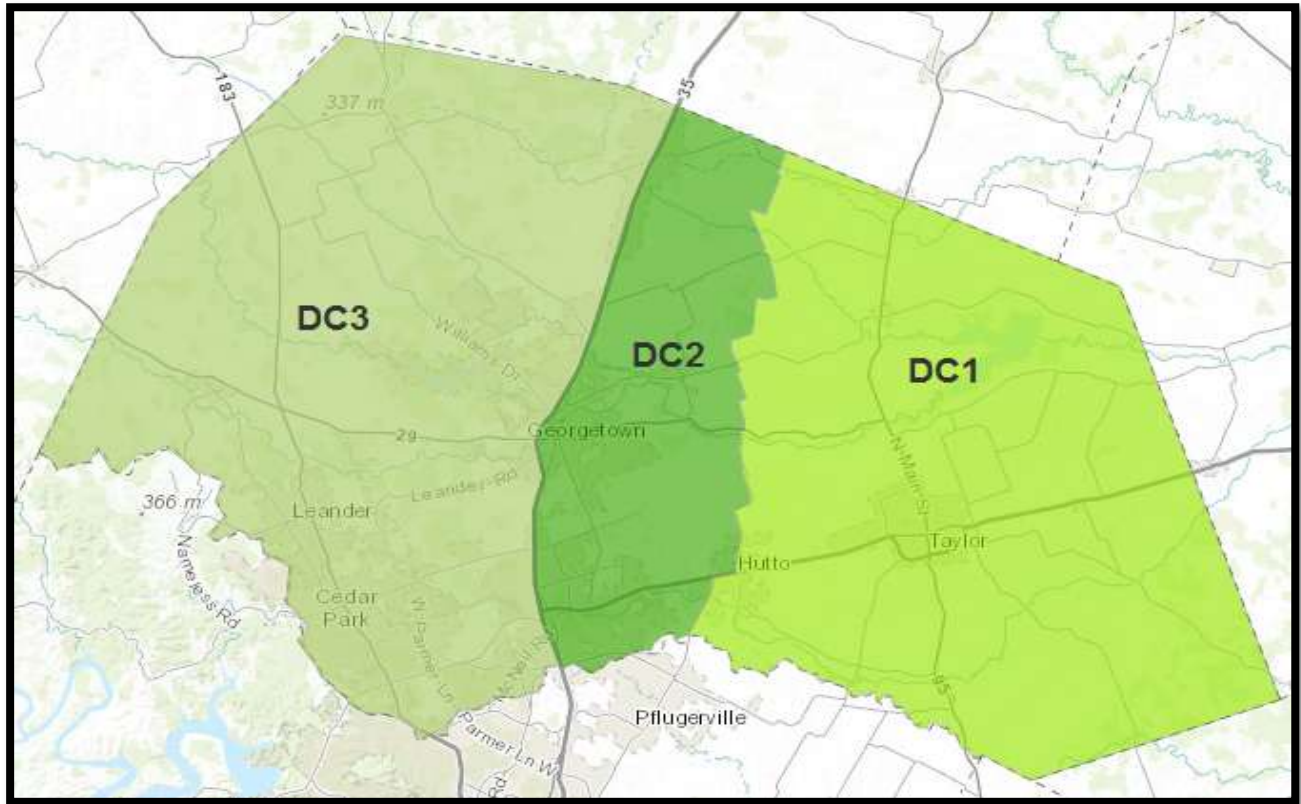


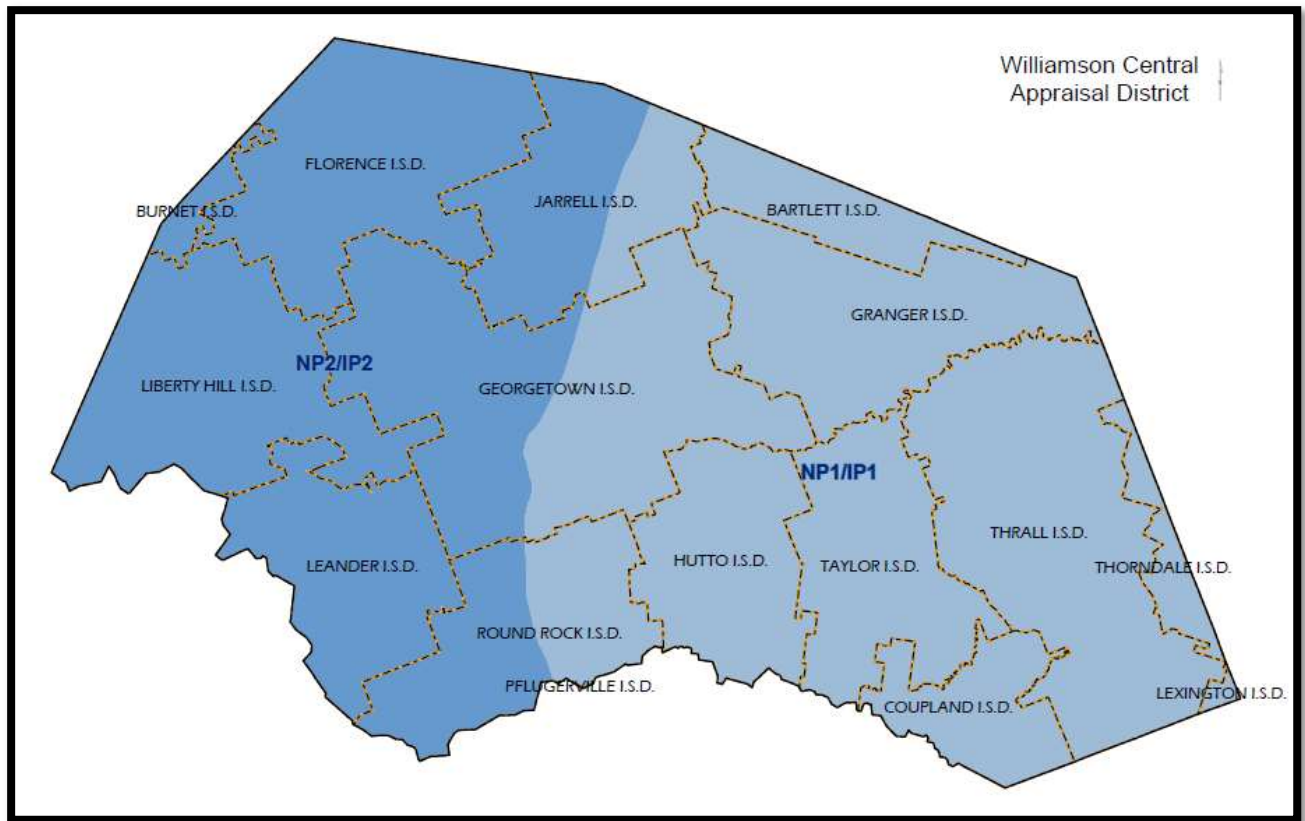
WILLAMSON CENTRAL APPRAISAL DISTRICT INTENSITY STANDARDS



Cropland:

Hay production falls under the Cropland classification if the property engages in these standard practices: tillage, fertilizing, cutting, baling, hauling, feeding, or marketing. In normal years, 2-3 cuttings can be achieved. Hay production should be approximately 3,000 lbs per acre. The hay must be a marketable product.

Note: The cutting and baling of unmanaged vegetation are not considered hay production.



Pastureland:

The information below shows typical animal types for Williamson County and is to be used for estimate purposes only. Please note that a minimum of **two animal units** are needed to qualify for the AG valuation.

The following tables show the minimum standard you must meet to qualify for AG or requalify following an audit. The intensity cannot go below these standards at any time during the duration of your AG valuation unless authorized by a State Declaration.

WEST of IH35

Cattle: Improved Pasture 2 (IP2)								
Number of Cattle:	2	3	4	5	6	7	8	9
Acres:	16	24	32	40	48	56	64	72
Cattle: Native Pasture 2 (NP2)								
Number of Cattle:	2	3	4	5	6	7	8	9
Acres:	18	27	36	45	54	63	72	81

Young Cattle 1 to 2 yrs old: Improved Pasture 2 (IP2)								
Number of Young Cattle:	4	6	8	10	12	14	16	18
Acres:	16	24	32	40	48	56	64	72
Young Cattle 1 to 2 yrs old: Native Pasture 2 (NP2)								
Number of Young Cattle:	4	6	8	10	12	14	16	18
Acres:	18	27	36	45	54	63	72	81

Calf Under 1 yr old: Improved Pasture 2 (IP2)								
Number of Calves:	8	12	16	20	24	28	32	36
Acres:	16	24	32	40	48	56	64	72
Calf Under : Native Pasture 2 (NP2)								
Number of Calves:	8	12	16	20	24	28	32	36
Acres:	18	27	36	45	54	63	72	81

Sheep/Goats: Improved Pasture 2 (IP2)								
Number of Goats/Sheep:	14	21	28	35	42	49	56	63
Acres:	16	24	32	40	48	56	64	72
Sheep/Goats: Native Pasture 2 (NP2)								
Number of Goats/Sheep:	14	21	28	35	42	49	56	63
Acres:	18	27	36	45	54	63	72	81

Please note that intensities for bees do no vary between east and west

Bees								
Number of Hives:	6	7	8	9	10	11	12	13
Acres:	5	7	9	11	13	15	17	19

EAST of IH35

Cattle: Improved Pasture 1 (IP1)								
Number of Cattle:	2	3	4	5	6	7	8	9
Acres:	8	12	16	20	24	28	32	36
Cattle: Native Pasture 1 (NP1)								
Number of Cattle:	2	3	4	5	6	7	8	9
Acres:	10	15	20	25	30	35	40	45

Young Cattle 1 to 2 yrs old: Improved Pasture 1 (IP1)								
Number of Young Cattle:	4	6	8	10	12	14	16	18
Acres:	8	12	16	20	24	28	32	36
Young Cattle 1 to 2 yrs old: Native Pasture 1 (NP1)								
Number of Young Cattle:	4	6	8	10	12	14	16	18
Acres:	10	15	20	25	30	35	40	45

Calf Under 1 yr old: Improved Pasture 1 (IP1)								
Number of Calves:	8	12	16	20	24	28	32	36
Acres:	8	12	16	20	24	28	32	36
Calf Under : Native Pasture 1 (NP1)								
Number of Calves:	8	12	16	20	24	28	32	36
Acres:	10	15	20	25	30	35	40	45

Sheep/Goats: Improved Pasture 1 (IP1)								
Number of Goats/Sheep:	14	21	28	35	42	49	56	63
Acres:	8	12	16	20	24	28	32	36
Sheep/Goats: Native Pasture 1 (NP1)								
Number of Goats/Sheep:	14	21	28	35	42	49	56	63
Acres:	10	15	20	25	30	35	40	45

Please note that intensities for bees do no vary between east and west

Bees								
Number of Hives:	6	7	8	9	10	11	12	13
Acres:	5	7	9	11	13	15	17	19

For any parcels of larger size than the examples above, use the information below to calculate the exact number of animal units needed to qualify.

Note: Overgrazing may affect the eligibility for AG Valuation.

Pasture Land East of IH35 (IP1/NP1)	Typical acres per Animal unit	Acres needed for minimum Animal units
Improved Pasture 1	4 Acres	8 Acres
Native Pasture 1	5 Acres	10 Acres
Pasture Land West of IH35 IP2/NP2	Typical acres per Animal unit	Acres needed for minimum Animal units
Improved Pasture 2	8 Acres	16 Acres
Native Pasture 2	9 Acres	18 Acres